

Disc brake

Technical data and dimensions

FAV 10 and FAV 15 calipers

Fail safe
 Spring application / Thrustor release
 Manual centering
 Lining wear compensation
 Linings with wear indicator wires
 Thrustor stroke control switch
 Opening proving switch
 Stainless steel pins

Manual release lever
 Protection class C5 standard ISO12944-2

Operating conditions:

- Ambient temperature: -20°C to +50°C
- Relative humidity ≤ 70%
- Dust in atmosphere ≥ 65µ

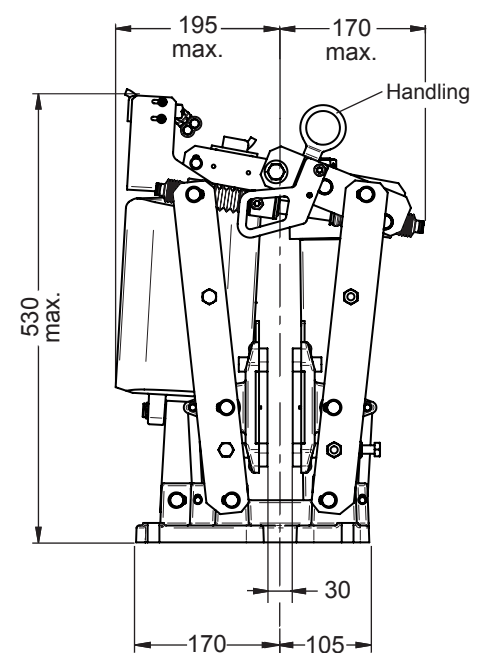
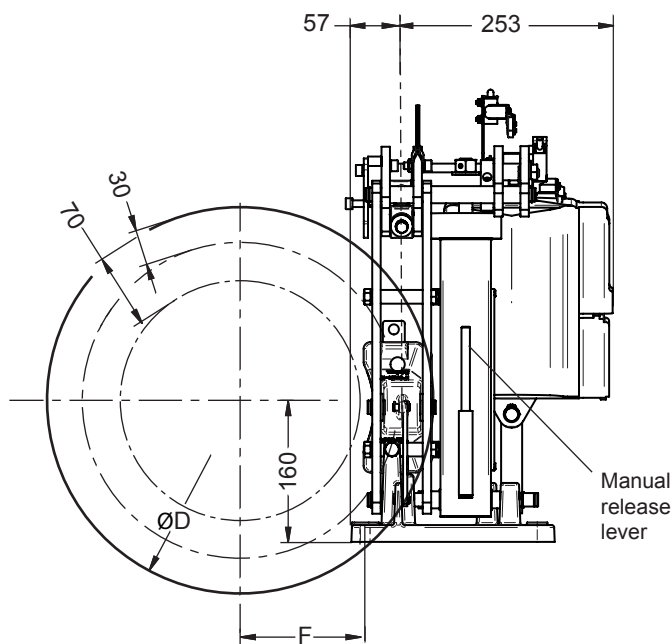
Other conditions: consult Stromag France.

Use:

- Service brake

Options :

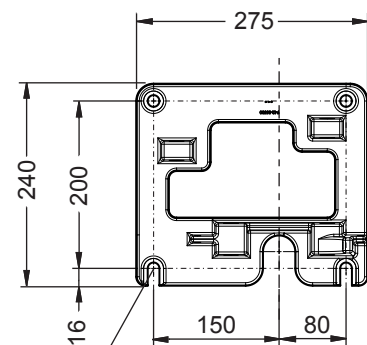
- SIDHT : Steel works High Temperature
- HT : High Temperature Thrustor
- Thrustor VS-I-256 or Ed23/5 - 230/400V (FAV10)
- Thrustor VS-I-356 or Ed30/5 - 230/400V (FAV15)



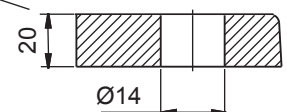
Weight without thrustor: 27 kg
 Weight with thrustor : FAV10 : 40 kg, FAV15 : 44 kg
 Torque and effort values are subject to a variation of ±10%

FAV10 and FAV15 calipers are associated with linings type **WS1-5**.

Discs (ØD)		220	260	315	355	395	445	495	550	
Nominal torque, 1 caliper *	FAV10 N.m.	221	275	349	403	457	525	592	661	
	FAV15 N.m.	265	330	410	485	550	630	710	795	
Maximum disc speed for nominal torque **		rpm	4300	3600	3000	2700	2400	2100	1900	1800
F		mm	47	66	93	113	135	160	185	213
Maximum reaction on shaft	FAV10 N	2700								
	FAV15 N	3200								



4 holes Ø 14
 for bolts M12
 class 8-8



* Braking torque is adjustable from 100% to 70% of nominal torque,
 friction factor $\mu = 0,37$

** For higher speeds, consult Stromag France

Due to continuous development and improvement, all dimensions and characteristics are subject to change without notice.

Installation and maintenance Leaflet No. M10022-01
 Spare parts No. S10022-01
 Options HT and SIDHT No. A08297-01

23/05/13

T10022-01-I

Disc brake

Technical data and dimensions

Caliper FAV 50-VS (after serial number D314)

Fail safe
 Spring application / Thrustor release
 Auto centering
 Lining wear compensation
 Thrustor stroke control switch
 Opening proving switch
 Stainless steel pins
 Manual release system

Operating conditions:

- Ambient temperature: -20°C to +50°C
- Relative humidity ≤ 70%
- Dust in atmosphere ≥ 65µ

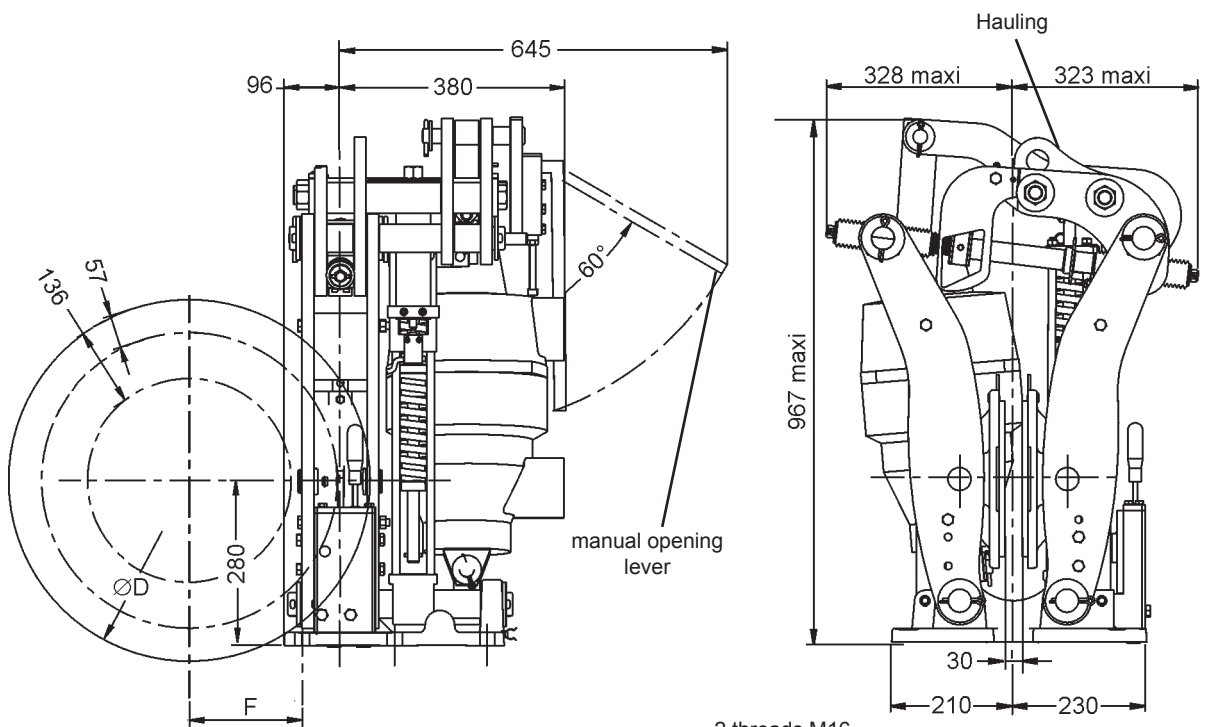
Other conditions: consult Stromag France.

Use:

- Service brake

Options :

- Lining full wear control switch
- MSF : Monitoring modul for FAV
- SIDHT : High Temperature Steel works
- HT : High Temperature Thrustor



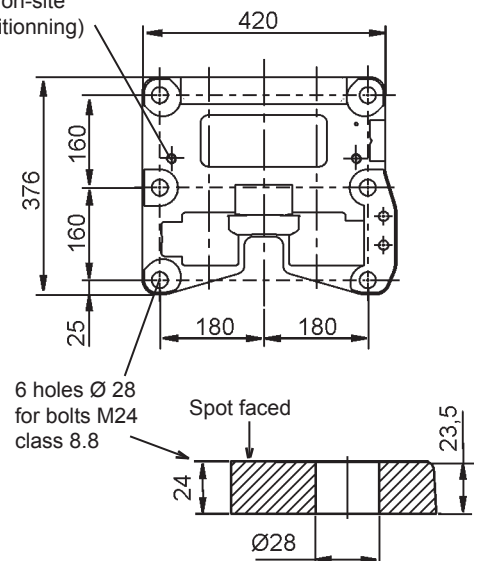
Weight without thrustor: 180 kg
 Weight with thrustor of FAV503 : 224 kg
 Torque and effort values are subject to a variation of ±10%
 Lining quality WS1-5 in standard. Energy application : lining quality WS1-3

Discs (ØD)	445	495	550	625	705	795	995
Nominal torque, 1 caliper * (N.m): - FAV503 VS-III-3010				12360	14270	16500	21270
Maximum disc speed for nominal torque (rpm) **				1500	1300	1200	900
F (mm) (F=D/2-130)				183	223	268	368
Maximum reaction on shaft (N): - FAV503 VS-III-3010	48 400						

* Nominal torque is adjustable from 100% to 70%

** For higher speeds, consult Stromag France

2 threads M16
 (for on-site
 positioning)



Due to continuous development and improvement, all dimensions and characteristics are subject to change without notice.

Installation and maintenance Leaflets No. M08295-02
 Spare parts No. S09297-02

30/05/13

T03525-02-D

Disc brake

Technical data and dimensions

Caliper FAV 50 (after serial number D314)

Fail safe
 Spring application / Thrustor release
 Auto centering
 Lining wear compensation
 Thrustor stroke control switch
 Opening proving switch
 Stainless steel pins
 Manual release system

Operating conditions:

- Ambient temperature: -20°C to +50°C
- Relative humidity \leq 70%
- Dust in atmosphere \geq 65 μ

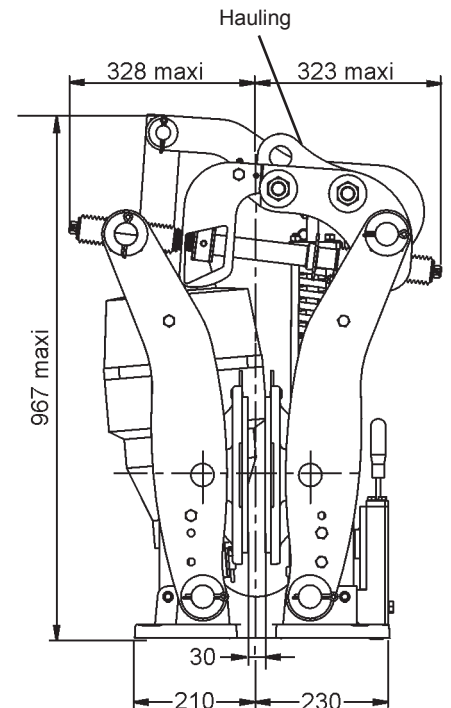
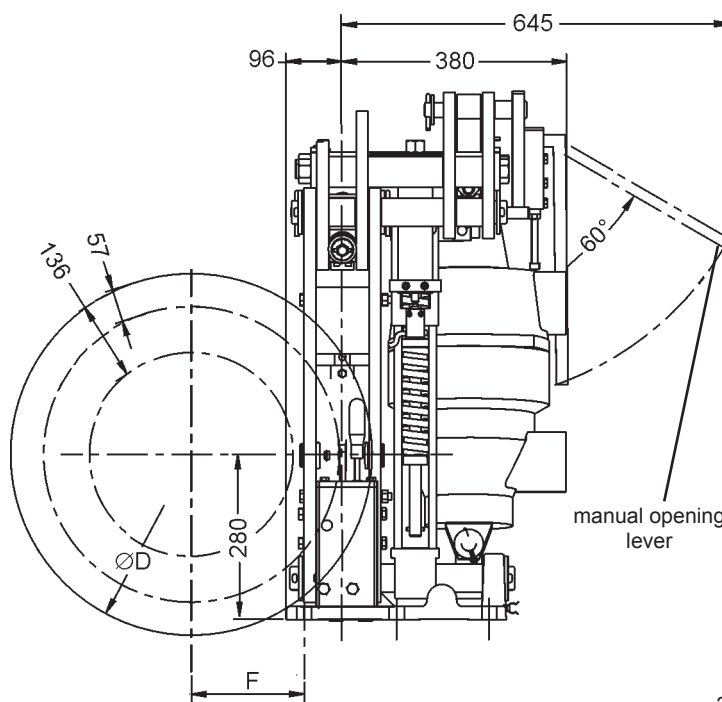
Other conditions: consult Stromag France.

Use:

- Service brake

Options :

- Lining full wear control switch
- MSF : Monitoring modul for FAV
- SIDHT : High Temperature Steel works
- HT : High Temperature Thrustor

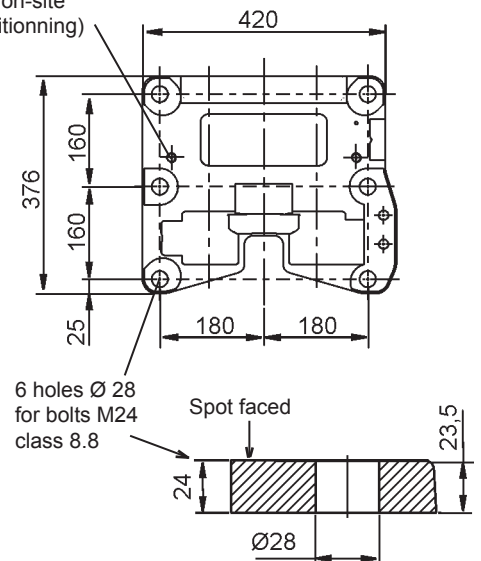


Weight without thrustor: 180 kg
 Weight with thrustor of FAV503 : 220 kg
 Torque and effort values are subject to a variation of \pm 10%
 Lining quality WS1-5 in standard. Energy application : lining quality WS1-3

Discs (ØD)	445	495	550	625	705	795	995
Nominal torque, 1 caliper * (N.m): - FAV503 Ed-301/100				12360	14270	16500	21270
Maximum disc speed for nominal torque (rpm) **				1500	1300	1200	900
F (mm) (F=D/2-130)				183	223	268	368
Maximum reaction on shaft (N): - FAV503 Ed-301/100	48 400						

* Nominal torque is adjustable from 100% to 70%
 ** For higher speeds, consult Stromag France

2 threads M16
 (for on-site
 positioning)



Due to continuous development and improvement, all dimensions and characteristics are subject to change without notice.

Installation and maintenance No. M08295-01
 Spare parts No. S09297-01

04/03/11

T03525-01-C

Disc brake

Technical data and dimensions

Caliper FAV 41-VS

Fail safe

Spring application / Thrustor release

Auto centering

Lining wear compensation

Thrustor stroke control switch

Opening proving switch

Stainless steel pins

Manual release lever for FAV411/412-VS

Manual release system for FAV413-VS

Operating conditions:

- Ambient temperature: -20°C to +50°C

- Relative humidity ≤ 70%

- Dust in atmosphere ≥ 65µ

Other conditions: consult Stromag France.

Use:

- Service brake

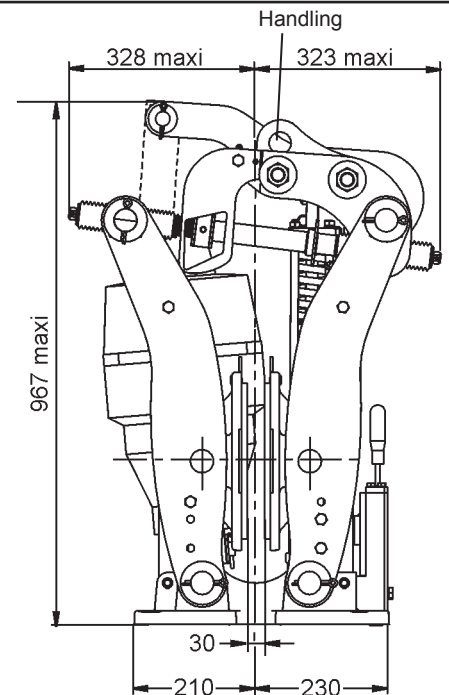
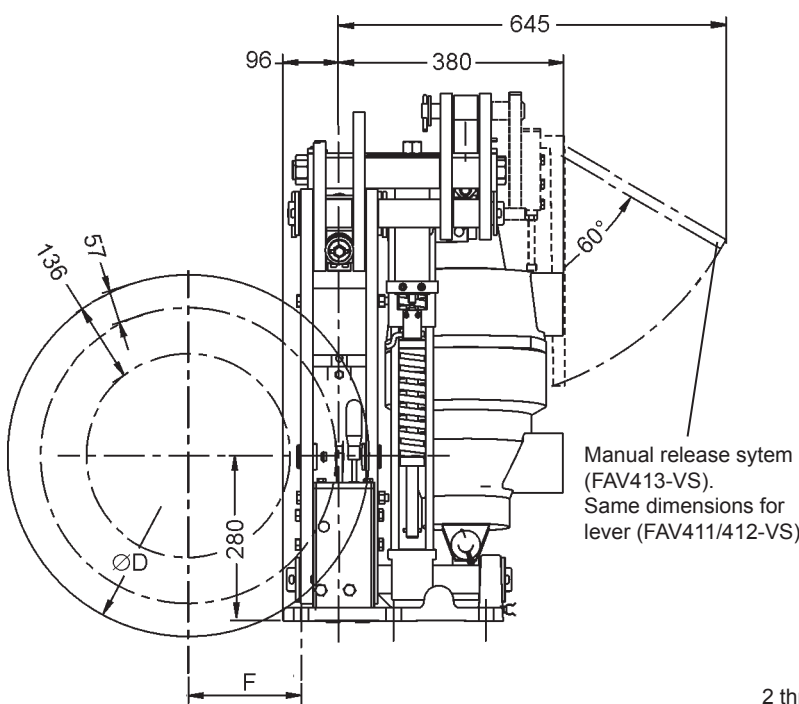
Options :

- Lining full wear control switch

- MSF : Monitoring modul for FAV

- SIDHT : High Temperature Steel works

- HT : High Temperature Thrustor



Weight without thrustor : 180 kg / Weight with thrustor : 222 kg

Torque and effort values are subject to a variation of ±10%

The disc run-out must not exceed 0,08 % of the maximum radius

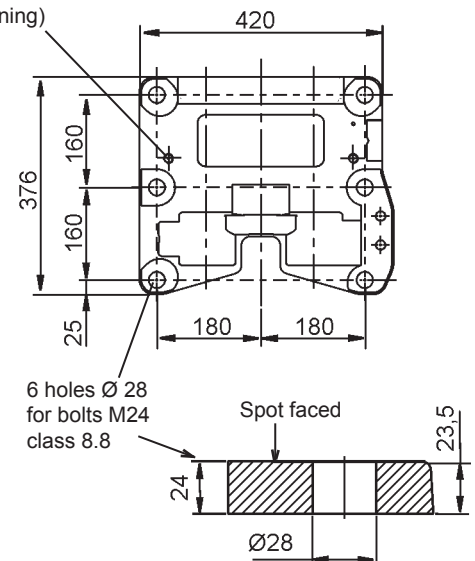
and the disc axial displacement must be smaller than 0,5 mm.

Lining quality WS1-5 in standard. Energy application : lining quality WS1-3

Discs (ØD)	445	495	550	625	705	795	995
Nominal torque, 1 caliper * (N.m)	- FAV413 VS-III-3010 - FAV412 VS-III-2010 - FAV411 VS-III-1310	- 4960 3050	- 5650 3500	9700 6600 4100	11200 7650 4750	12950 8800 5450	16700 - -
Maximum disc speed for nominal torque (rpm) **	2100	1900	1800	1500	1300	1200	900
F (mm) (F=D/2-130)	93	118	145	183	223	268	368
Maximum reaction on shaft (N)	- FAV413 VS-III-3010 - FAV412 VS-III-2010 - FAV411 VS-III-1310			38000 26000 16000			

* Nominal torque is adjustable from 100% to 70%

** For higher speeds, consult Stromag France



Due to continuous development and improvement, all dimensions and characteristics are subject to change without notice.

Installation and maintenance Leaflet No. M08294-02

Spare parts

No. S09294-02

29/05/13

T03524-02-C

Disc brake

Technical data and dimensions

Caliper FAV 41

Fail safe
 Spring application / Thrustor release
 Auto centering
 Lining wear compensation
 Thrustor stroke control switch
 Opening proving switch
 Stainless steel pins
 Manual release lever for FAV411 and 412
 Manual release system for FAV413

Operating conditions:

- Ambient temperature: -20°C to +50°C
- Relative humidity \leq 70%
- Dust in atmosphere \geq 65 μ

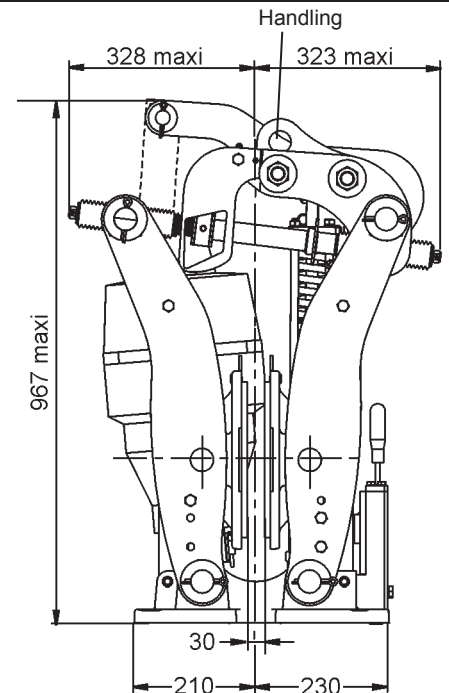
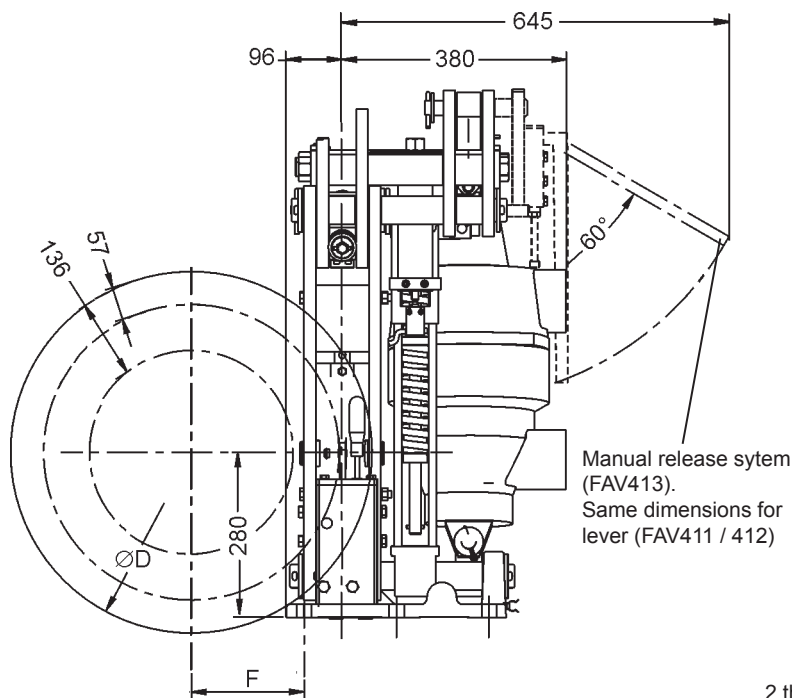
Other conditions: consult Stromag France.

Use:

- Service brake

Options :

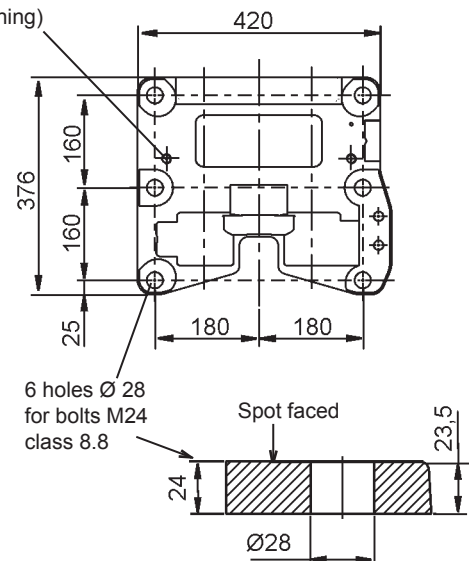
- Lining full wear control switch
- MSF : Monitoring modul for FAV
- SIDHT : High Temperature Steel works
- HT : High Temperature Thrustor



Weight without thrustor : 180 kg / Weight with thrustor : 220 kg
 Torque and effort values are subject to a variation of $\pm 10\%$
 The disc run-out must not exceed 0,08 % of the maximum radius and the disc axial displacement must be smaller than 0,5 mm.
 Lining quality WS1-5 in standard. Energy application : lining quality WS1-3

Discs ($\varnothing D$)	445	495	550	625	705	795	995	
Nominal torque, 1 caliper * (N.m)	- FAV413 Ed-301/10 - FAV412 Ed-201/10 - FAV411 Ed-121/10	- 4960 3050	- 5650 3500	9700 6600 4100	11200 7650 4750	12950 8800 5450	16700 - -	
Maximum disc speed for nominal torque (rpm) **	2100	1900	1800	1500	1300	1200	900	
F (mm) (F=D/2-130)	93	118	145	183	223	268	368	
Maximum reaction on shaft (N)	- FAV413 Ed-301/10 - FAV412 Ed-201/10 - FAV411 Ed-121/10	38000 26000 16000						

* Nominal torque is adjustable from 100% to 70%
 ** For higher speeds, consult Stromag France



Due to continuous development and improvement, all dimensions and characteristics are subject to change without notice.

Installation and maintenance Leaflet No. M08294-01
 Spare parts No. S09294-01

16/02/11

T03524-01-B

Disc brake

Technical data and dimensions

Caliper FAV 21-VS

Fail safe
Spring application / Thrustor release
Auto centering
Lining wear compensation

Thrustor stroke control switch
Opening proving switch
Stainless steel pins

Operating conditions:

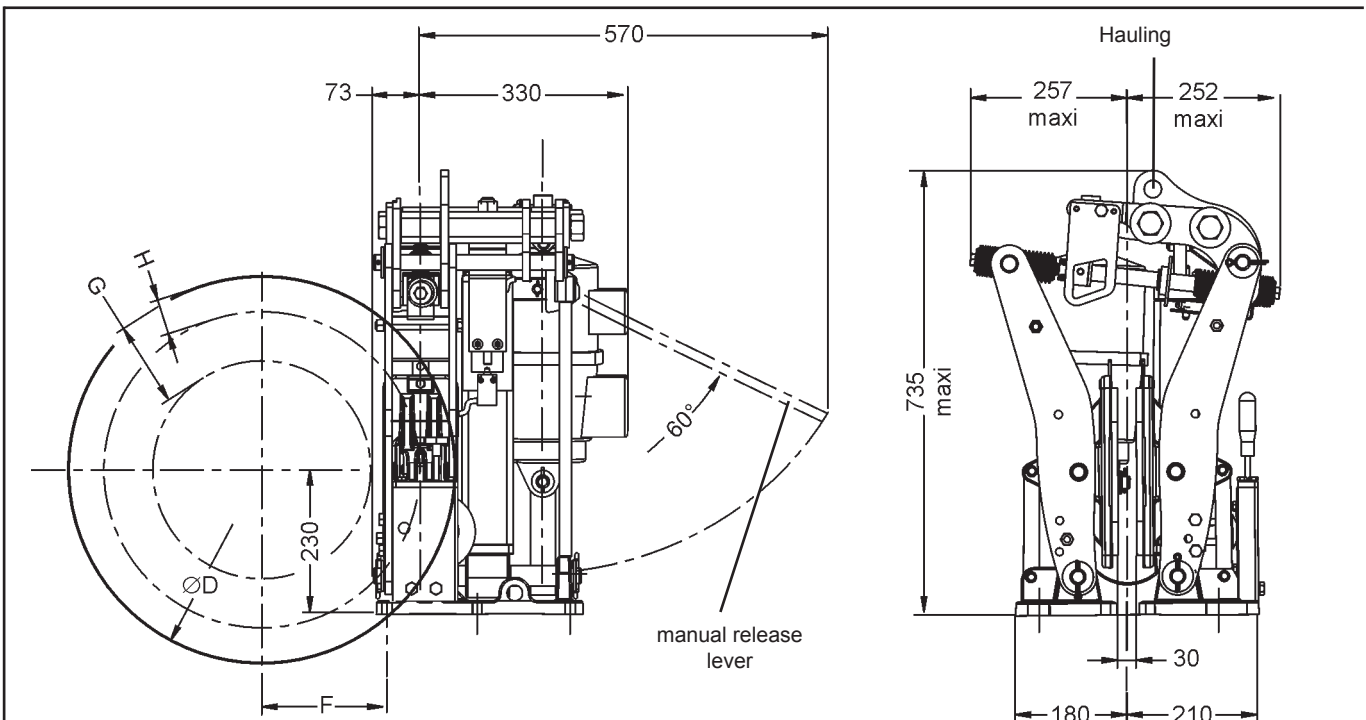
- Ambient temperature: -20°C to +50°C
 - Relative humidity $\leq 70\%$
 - Dust in atmosphere $\geq 65\mu$
- Other conditions: consult Stromag France.

Use:

- Service brake

Options :

- Lining full wear control switch
- MSF : Monitoring modul for FAV
- SIDHT : High Temperature Steel works
- HT : High Temperature Thrustor
- Manual release lever

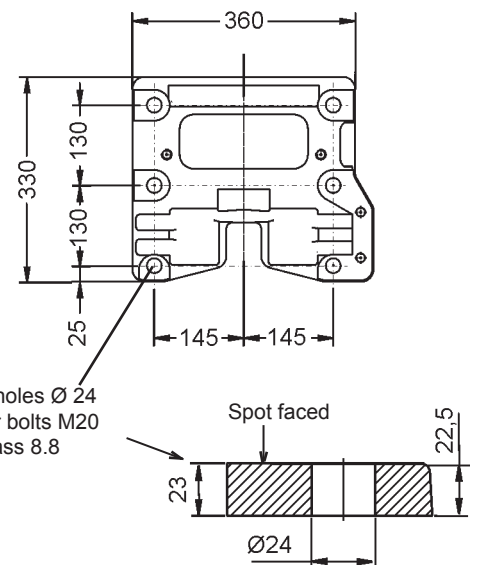


Weight with thrustor and lining pads : 130 kg

Torque and effort values are subject to a variation of $\pm 10\%$

Lining quality WS1-5 in standard. Energy application : lining quality WS1-3

Discs (ØD)			355	395	445	495	550	625	705
Nominal torque *, 1 caliper	- FAV213 VS II1306	N.m.	-	-	2260	2590	2990	3450	4000
	- FAV212 VS II806	N.m.	1300	1500	1700	1950	2250	2600	-
	- FAV211 VS II506	N.m.	700	750	900	1000	1150	1350	-
Max. disc speed for nominal torque **		rpm	2700	2400	2100	1900	1800	1500	1500
F		mm	122	142	118	143	170	208	248
F		mm	(D/2-56)			(D/2-105)			
G		mm	67			136			
H		mm	32			57			
Maximum reaction on shaft	- FAV213 VS II1306	N	-			13600			
	- FAV212 VS II806	N	9100			10200			-
	- FAV211 VS II506	N	4500			5300			-



* Nominal torque is adjustable from 100% to 70%

** For higher speeds, consult GKN Stromag France

Due to continuous development and improvement, all dimensions and characteristics are subject to change without notice.

Disc brake

Technical data and dimensions

Caliper FAV 21

Fail safe

Spring application / Thrustor release

Auto centering

Lining wear compensation

Thrustor stroke control switch

Opening proving switch

Stainless steel pins

Operating conditions:

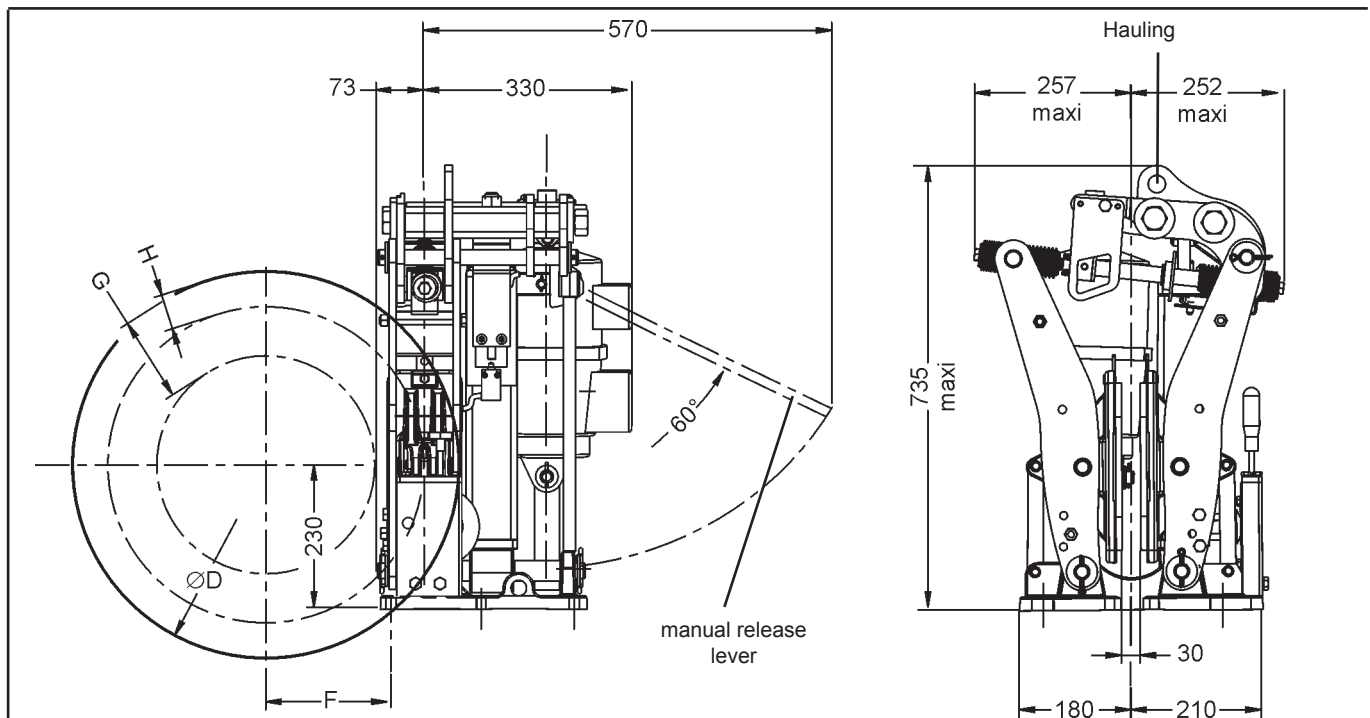
- Ambient temperature: -20°C to +50°C
 - Relative humidity ≤ 70%
 - Dust in atmosphere ≥ 65µ
- Other conditions: consult Stromag France.

Use:

- Service brake

Options :

- Lining full wear control switch
- MSF : Monitoring modul for FAV
- SIDHT : High Temperature Steel works
- HT : High Temperature Thrustor
- Manual release lever



Weight with thrustor and lining pads : 133 kg

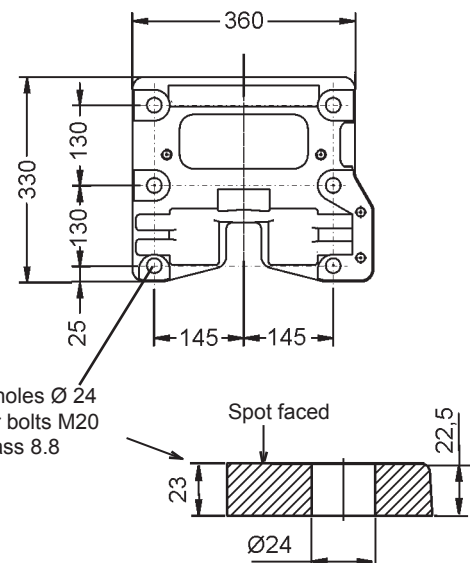
Torque and effort values are subject to a variation of ±10%

Lining quality WS1-5 in standard. Energy application : lining quality WS1-3

Discs (ØD)		445	495	550	625
Nominal torque, 1 caliper *					
- FAV212 Ed-80/6	N.m	1700	1950	2250	2600
- FAV211 Ed-50/6	N.m	900	1000	1150	1350
Maximum disc speed for nominal torque **					
	rpm	2100	1900	1800	1500
F	mm	118	143	170	208
F	mm	(D/2-105)			
G	mm	136			
H	mm	57			
Maximum reaction on shaft					
- FAV212 Ed-80/6	N	10200			
- FAV211 Ed-50/6	N	5300			

* Nominal torque is adjustable from 100% to 70%

** For higher speeds, consult Stromag France



Due to continuous development and improvement, all dimensions and characteristics are subject to change without notice.